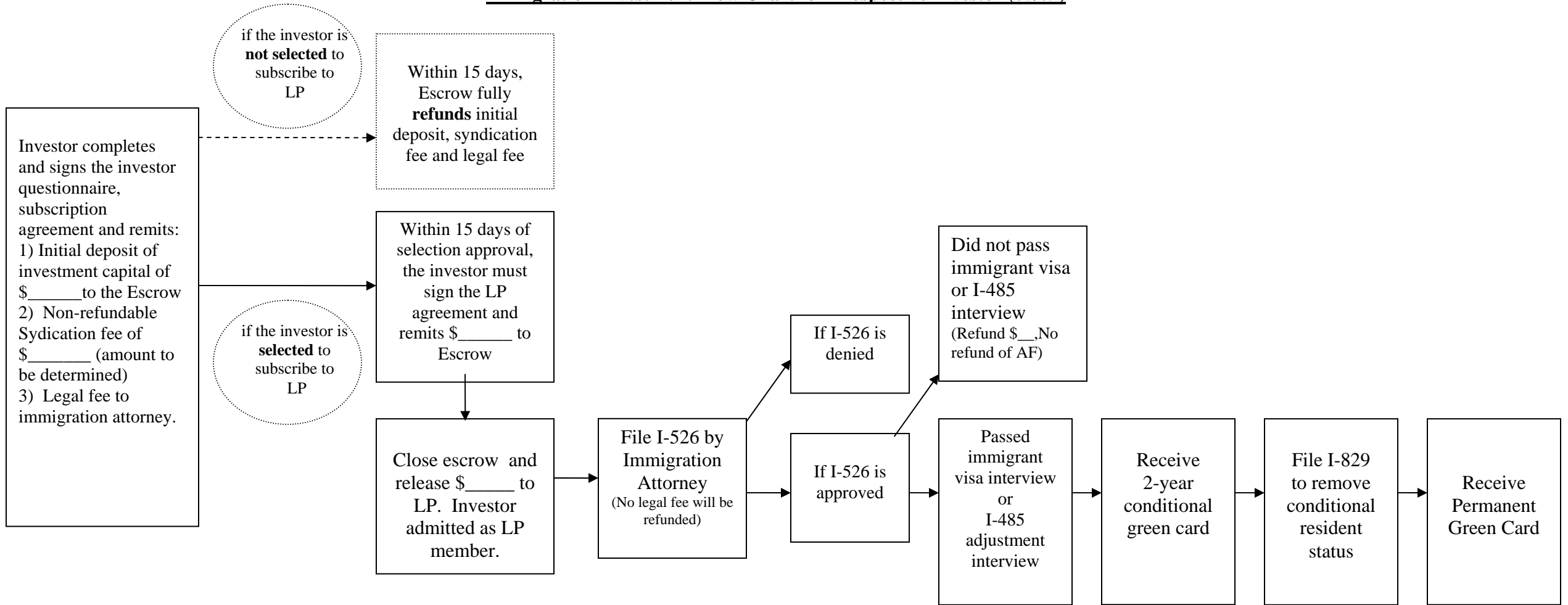


**Immigration Investment Flow Chart for Prospective Investor (05/09)**



**Estimated Timeline:**

Day 1	Day 5	Day 15 (if selected) Day 15 (if not selected)	Day 30	Day 180	At least 6-8 months after I-526 approval	1 -3 months after I-485 interview or landing in U.S.	1 year 9 months after getting conditional green card	1 -3 months after I-829 approval
-------	-------	--	--------	---------	--	--	--	----------------------------------